



Total Solution Provider in Saw Device

SL7003V

70.0MHz IF SAW Filter

2.85MHz Bandwidth

Revision 1: 29. Oct. 2007



- Electrical Characteristics
 - Package Dimensions
 - Testing Environment
 - Frequency Characteristics
-

SAWNICS Inc.

460 Cheonheung-ri, Seonggeo-eup, Cheonan-si, Chungcheongnam-do, 330-836 / Korea.
Tel: +82 41 550 9372 / Fax: +82 41 550 9399 / www.sawnics.com

□ Electrical Characteristics

Maximum Ratings

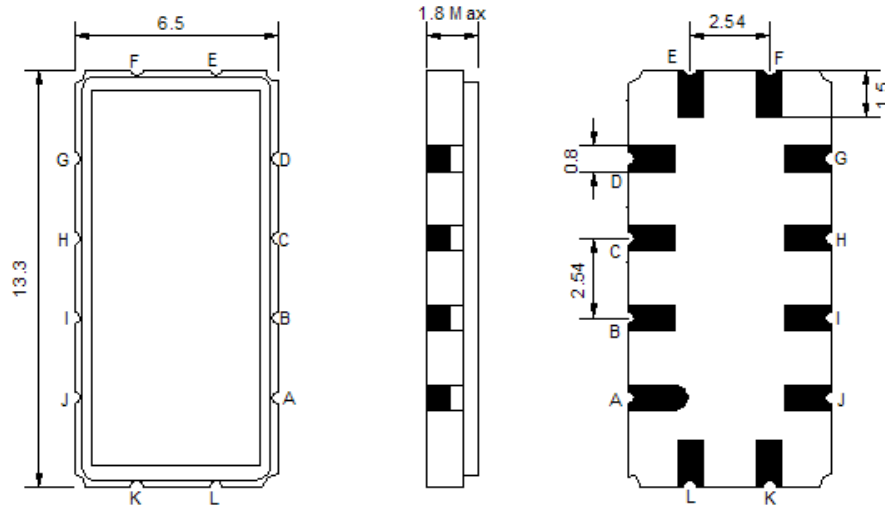
Parameters Description	Unit	Minimum	Typical	Maximum
Operation Temperature Range	°C	-30	-	80
Storage Temperature Range	°C	-40	-	85
Maximum DC Voltage	V	-	-	10
Maximum Input Power	dBm	-	-	10
Source Impedance (single ended) ⁽¹⁾	Ω	-	50	-
Load Impedance (single ended) ⁽¹⁾	Ω	-	50	-
Package type & size	V			
Length x Width	mm ²	-	13.3 x 6.5	-
Height	mm	-	-	1.8

Electrical Specification

Parameters Description	Unit	Minimum	Typical	Maximum
Center Frequency (Fo)	MHz	69.85	70.0	70.15
Insertion Loss at Fo	dB	-	7.7	8.2
Amplitude Ripple Variation	dB _{p-p}	-	0.65	1.0
Group Delay Variation	nsec	-	145	190
Absolute Delay at Fo	μsec	-	1.07	-
Temperature Coefficient	ppm/°C	-	-84	-
Bandwidth at -1.0 dB	MHz	2.4	2.85	-
Bandwidth at -3.0 dB	MHz	3.0	3.55	-
Bandwidth at -40.0 dB	MHz	-	6.18	6.8
Ultimate Rejection	dB	40	45	-

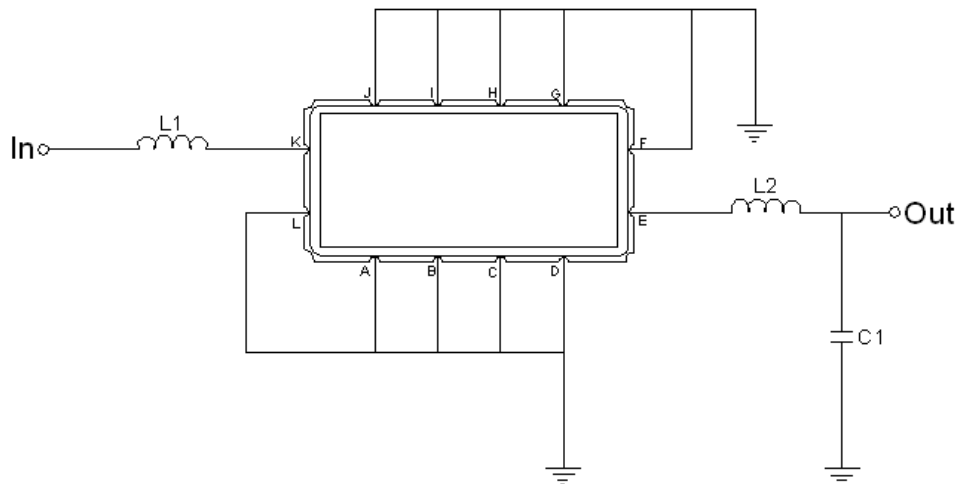
Notes : (1) With Matching Network (Ref. Testing Environment Circuit as shown below).
Those impedances could be modified with different impedance values and/or structures, if necessary.

□ Package Dimensions



Pin Description	
A, B, C, D, F, G, H, I, J, L	Ground
K	Input
E	Output

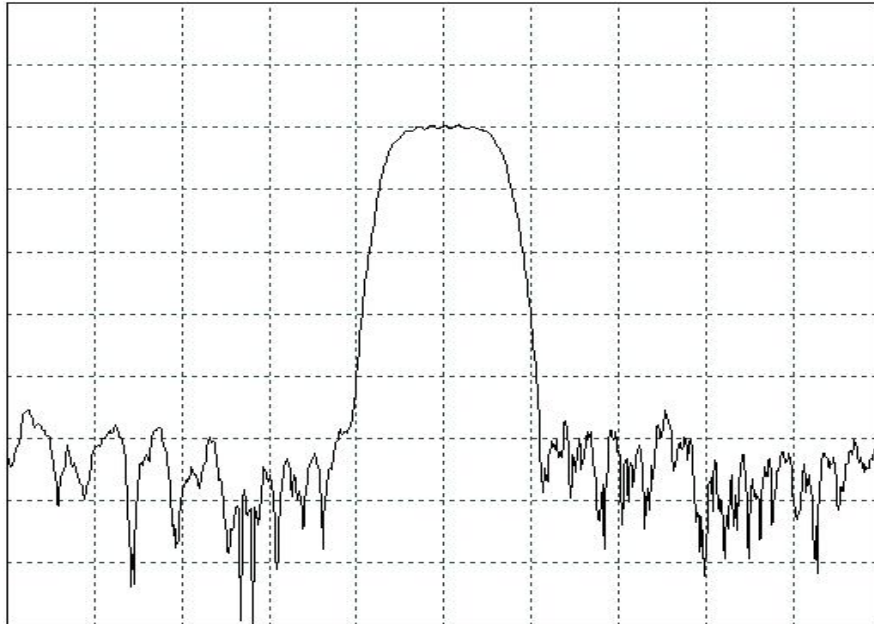
□ Testing Environment



Test Fixture & Values	
Input	L1=270 nH , Q>40
Output	L2=56 nH , Q>40 C = 22pF
Source/Load Impedance	50 Ω

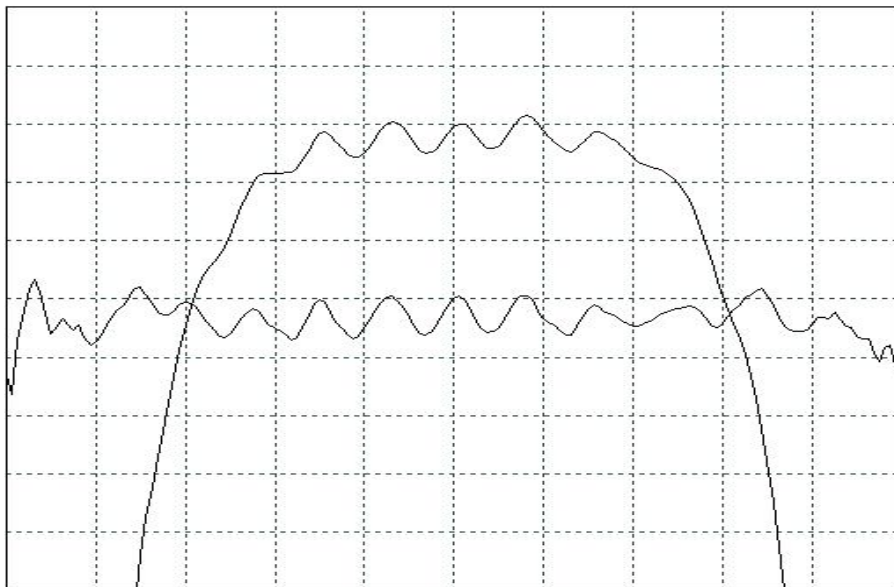
□ Frequency Characteristics

Frequency Response



Horizontal : 3.0 MHz/Div

Vertical : 10 dB/Div



Horizontal : 0.6 MHz/Div

Vertical : 1.0 dB/Div

Vertical : 200 ns/Div



SAWNICS

Data Sheet(Rev 1)

SL7003V

70.0MHz IF SAW Filter